

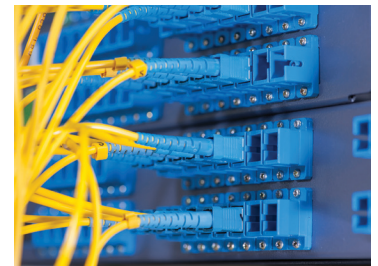
## Ethernet-over-Copper (EoC)

Transbeam was one of the first to offer Ethernet-over-Copper (EoC) to the market and has been honored with various industry awards for our EoC technology leadership. Transbeam's EoC solution provides reliable and affordable high-speed network access from 3 Mbps to 45 Mbps utilizing traditional copper wiring infrastructure. With affordable pricing and increased availability, EoC is becoming more popular as a means to deliver dedicated bandwidth to businesses for today's high capacity applications.

EoC is one of Transbeam's signature services based on our extensive nationwide network coverage and with one of the fastest installation rates for On-Net EoC - installed in less than two weeks. EoC can be used for both Data and Voice services including Dedicated Internet Access (DIA), MPLS, Private Networks including Private Point-to-Point (PtP) and Point-to-Multi-Point (PtMP) configuration, Hosted PBX, VoIP/SIP Trunks and multiple voice networking hand-off options including PRI, SIP Trunks and Analog POTS.

### Advantages of Ethernet-over-Copper (EoC)

- ▶ **Symmetrical and Guaranteed Bandwidth** - Business applications including video conferencing, IP telephony, and cloud computing require more bandwidth out to the Internet than traditional cable and DSL connections deliver. EoC's symmetrical connection delivers this added upstream capacity.
- ▶ **Reliability** - EoC achieves its high bandwidth by bonding up to eight pairs of copper wire into a powerful broadband connection. Should one pair fail, the remaining circuits continue to provide connectivity, keeping your business online.
- ▶ **Affordability & Accessibility** - EoC leverages the copper wires and network that are already connected to your business, keeping your cost to get connected low and ensuring a higher probability that EoC is available at your place of business.



### Key Benefits

- ▶ Guaranteed symmetrical bandwidth from 3 Mbps to 45 Mbps
- ▶ Ease of use and fast installation
- ▶ Scalable and cost-efficient
- ▶ Highly reliable service backed by Transbeam's SLA
- ▶ Monitored 24/7/365 by Transbeam's U.S. Based Network Operations Center (NOC)
- ▶ Quality of Service (QoS) prioritization over network

